



## Because of You...

*We can fulfill our mission to break the cycle of poverty at the start through nurturing care and an exceptional early learning program whereby we prepare young children for success in school and enable their parents to pursue educational and employment opportunities.*



2019 Annual Report

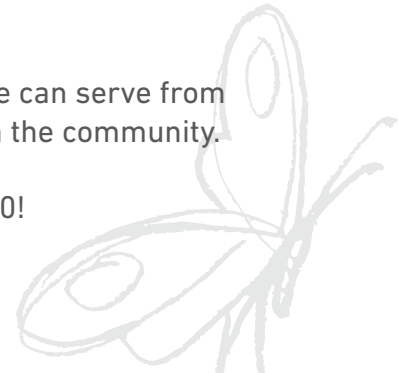
## About Bloom

- Serving children from 6 weeks to 5 years of age
- Half our capacity dedicated to children from low-income families
- Scholarship fund to cover the costs of tuition for families in need
- Values-based program and excellent curriculum with stellar learning and social outcomes
- Primarily serving children who live within the boundaries of the Wayzata School District, including all or parts of Wayzata, Plymouth, Orono, Minnetonka, Medina, Medicine Lake and Corcoran
- Accredited by the National Association for the Education of Young Children and 4-star Parent Aware rated

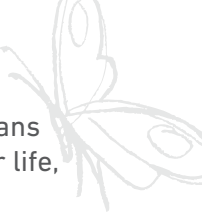
## Because of You...

- » We provided high-quality learning and childcare to 107 children and their families.
- » 44% received tuition assistance or were teachers' children; 56% paid full tuition
- » All our children, including 44 who received tuition assistance, performed at or above age-appropriate developmental expectations based on individual assessments.
- » Nine children who otherwise would not have had the opportunity to experience a school setting and build the necessary academic and social skills graduated from our pre-K classroom kindergarten ready. There were 18 graduates total.
- » We expanded the number of children we can serve from 70 to 116 by opening a second center in the community.

Together, we can achieve even more in 2020!



# Bloom's Mission Fulfilled – The Story of Lyndsey and Wesley



Lyndsey had a plan: attend Mankato State University to earn her degree in Special Education. But her plans were interrupted by the unanticipated arrival of her precious son, Wesley. Embracing this addition to her life, Lyndsey moved back home with her mother.

With childcare assistance, she was able to enroll Wesley at Bloom and continue her studies at Mankato's Edina campus. With the full support of Bloom and her mom, Lyndsey achieved her goal and graduated with her degree. She is now licensed in Special Education for kindergarten through 12th grade.

After student teaching, Lyndsey worked as a float at Bloom. Bloom hired her as a pre-K teacher last fall in a classroom that included Wesley! It's a lot to teach your son all day and be his mom all night, but they both have grown through the experience. Initially, Lindsey rented an apartment to be more independent. With low interest rates and a look toward the future, Lyndsey recently closed on a house five minutes from her mom.

Wesley, too, achieved a milestone, graduating from Bloom this spring ready for kindergarten. Since his arrival in the infant room, Bloom's teachers and nurturing environment have helped Wesley thoroughly blossom! He is talkative, outgoing and active and is a true advocate for Bloom when visitors tour. Bloom's Executive Director has dubbed him the Mayor of Bloom.

The same caring environment nurtured both Wesley and Lyndsey, fulfilling Bloom's mission. Bloom helped Lyndsey follow through on her plan. This mom and son duo are truly a Bloom family!

## 2019 Board of Directors

|                     |                     |                  |                  |
|---------------------|---------------------|------------------|------------------|
| Erik Aamoth         | Marc Christopherson | Jennifer Hoff    | Steve Richards   |
| Penny Blankenship   | Jeff Foels          | Pat Jenson Pelot | David Robertson  |
| Sue Korsman Branyon | Alysa Gardino       | Ben Lindblad     | Gary Sullivan    |
| Ann Ruhl Carlson    | Carol Hazzard       | Lisa McClelland  | Sondra Weinzierl |

## Executive Staff

|                    |                   |
|--------------------|-------------------|
| Melissa Musliner   | Alexandria Cannon |
| EXECUTIVE DIRECTOR | CENTER DIRECTOR   |
| Mary Olsen         | Hannah Nelson     |
| CENTER DIRECTOR    | BUSINESS MANAGER  |

## Summarized Statement of Financial Position (December 31, 2019)

### ASSETS

| Current Assets                       |                   |
|--------------------------------------|-------------------|
| Cash                                 | \$ 294,903        |
| Program Receivables, Net             | \$ 74,173         |
| Promises to Give, Net                | \$ 106,654        |
| Prepaid Expenses                     | \$ 7,881          |
| State Grant Receivable               | \$ 5,732          |
| Other Assets                         |                   |
| Endowment, Cash                      | \$ 46,345         |
| Equipment, Improvements, Intangibles |                   |
| Facility Improvements                | \$ 273,951        |
| Program Equipment                    | \$ 80,809         |
| Less Accumulated Depreciation        | \$ (82,028)       |
| <b>TOTAL ASSETS</b>                  | <b>\$ 808,420</b> |

### LIABILITIES & NET ASSETS

| Liabilities                               |                   |
|---|-------------------|
| Accrued Expenses                          | \$ 41,936         |
| Accounts Payable                          | \$ 4,925          |
| Total Current Liabilities                 | \$ 46,861         |
| Net Assets                                |                   |
| Without Donor Restrictions                | \$ 629,816        |
| With Donor Restrictions                   |                   |
| Perpetual in Nature (Endowment)           | \$ 46,345         |
| Purpose Restrictions                      | \$ 85,398         |
| Total Net Assets                          | \$ 761,559        |
| <b>TOTAL LIABILITIES &amp; NET ASSETS</b> | <b>\$ 808,420</b> |



**Bloom is a 501(c)(3) nonprofit organization with two locations:**

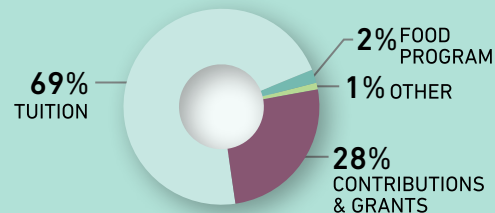
17805 County Road 6, Plymouth, MN 55447 / 763-449-0600

3355 Dunkirk Lane N, Plymouth, MN 55446 / 763-559-0045

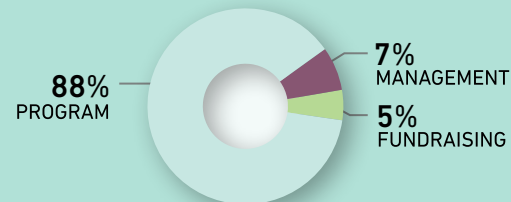
## 2019 Financial Highlights

(January 1 - December 31)

### REVENUE (\$1,588,992)



### EXPENSES (\$1,676,703)



### ENROLLMENT BREAKDOWN

